

# 1 Web License Overview, Set Up and Management

---

---

The information in this chapter is arranged into the following main topics:

- [\*Kurzweil 3000 for Windows Web License Overview\*](#) on page 2.
- [\*Web License System Requirements\*](#) on page 6.
- [\*Logging In To VPORT\*](#) on page 7.
- [\*Setting Up School Staff \(District Administrator\)\*](#) on page 8.
- [\*Setting Up and Managing Teachers \(Principals\)\*](#) on page 11.
- [\*Setting Up and Managing Students \(Teachers\)\*](#) on page 13.
- [\*Installing Web License Client Software\*](#) on page 18.
- [\*Installing the Web License Client Using the MSI Install \(IT Professionals\)\*](#) on page 19.

# Kurzweil 3000 for Windows Web License Overview

## Licenses for Using Kurzweil 3000 Over the Internet

The Kurzweil 3000 for Windows Version 12 Web License product offers convenient, secure Kurzweil 3000 license check in/out through the Web as well as a set of complementary Web services.

Unlike Network Edition licenses, the storage and management of which are on the local network, Web licenses are stored and managed by Cambium Learning and delivered to users over the Internet.

In addition to placing less of a burden on a school's technology team, Web Licensing allows users to access licenses and run Kurzweil 3000 from any computer on which the Kurzweil 3000 Web License Client software is installed, and from anywhere on the Internet, while taking personal settings and preferences with them.

## Powered by VPORT® Data Management System

At the heart of the Kurzweil 3000 for Windows Version 12 Web License product is the Voyager Passport (VPORT) Data Management system from Cambium Learning.

VPORT drives and manages Web Licensing as well as its Web-based services, such as Assignment and Reporting. It provides:

- An interface for setting up, managing and administering the licenses across multiple levels of users throughout the organization.
- Behind-the-scenes tracking of users, product licenses, usage, assignments, as well as student progress.
- Report generation and easy viewing of statistics for multiple levels of students, from districts, schools and classes in aggregate to specific individuals.

There are two main VPORT user levels that Kurzweil 3000 uses: District Administrator, such as Principal, who can set up school staff/teachers and

link them to classes. And the Teacher, who can access, set up and manage student accounts.

### **Complemented by Web-Based Universal Library**

Included with the Kurzweil 3000 Web License Edition is the Web Universal Library, a robust file repository that provides leveled access to files and documents.

The Web Universal Library is a complimentary service that enables schools to widely distribute curriculum, and share and reuse material. Teachers are able to post classwork and assignment-related material, and students can access those files and documents from anywhere on the Internet, from any Web-licensed Client computer, at any time.

Combined with the Assignment and Reporting services, the Web Universal Library, offers extensive capabilities for publishing, accessing, submitting assignments, collaborating, and tracking student progress.

For additional details about the Web Universal Library, see [Chapter 2, Web Universal Library Services](#).

### **Add-On Web-Based Assignment and Reporting Services**

With Web Universal Library and VPORT underpinnings, Web Assignment service offers schools a comprehensive, integrated and powerful system for creating, tracking and managing assignments, as well as for tracking and managing assignment-centered collaboration between teachers and students.

Completely VPORT-based, Web Reporting service offers school administrators and teachers views of statistics and data for student progress and performance from the district and school to the class and individual levels.

For more information about the Assignment service, see [The Kurzweil 3000 Web Assignment Service](#) on page 25 in [Chapter 3, Kurzweil 3000 Web Assignment and Reporting Service](#).

Details about the Reporting service are in [The Kurzweil 3000 Web Reporting Service](#) on page 59 in [Chapter 3, Kurzweil 3000 Web Assignment and Reporting Service](#).

## **All Preferences, Customized Lists, Dictionaries and Settings Travel with the User**

Kurzweil 3000 Web License system maintains each user's personal preferences, settings and any feature that is customizable, including Toolbar sets, Word Lists, OCR Corrections list, and Word Prediction and Spell Check, dictionaries, are stored on the Kurzweil 3000 Web License server as well as locally on the Client computer. Upon logging in, Kurzweil 3000 checks both locations and uses the latest settings from either location.

Saving a Toolbar Set saves to the Web License server so that others with permissions can access the set.

## **How Does Web License Work?**

Once your organization completes the Web License product purchase, and schools and authorized District Administrator users have been set up, the general steps for setting up Web Licensing are as follows; the person responsible for the task(s) is in parentheses.

(District Administrator - this could be an IT professional or school administrator)

1. Set up school staff/users, such as Principals and Teachers in VPORT. See [Logging In To VPORT](#) on page 7.

(Principal)

2. Add Teachers in VPORT. See [Setting Up and Managing Teachers \(Principals\)](#) on page 11.

(Teacher)

3. Add Students to their classes in VPORT. See [Setting Up and Managing Teachers \(Principals\)](#) on page 11.

(Any end-user: Administrator, Teacher, Parent or Student)

4. Install Web License Client software. See [Installing Web License Client Software](#) on page 18.

Teachers and students are ready to log in to Web-license Client computer and use Kurzweil 3000 from the Web.

Kurzweil 3000 authenticates the login and license information and runs the program with the authenticated user's preferences and settings.

As teachers and students work with Kurzweil 3000, the Web Universal Library stores, tracks and provides access to documents and files that are saved to it. Meanwhile, VPORT tracks usage and data for Assignments and Reporting services.

## Web License System Requirements

Processor: 1.3 GHz Pentium 4 or better

System Memory: 512 MB (1GB for 64-bit Windows Vista or Windows 7)

Hard Disk Space: 2 GB free space

Operating System: Microsoft® XP with Service Pack 3 or later, Windows Vista with Service Pack 1 or later, Windows 7

Video RAM: 4 MB or better

Screen Resolution: 1024x768 24-bit or better

Color Palette: 16-bit

DVD drive

Keyboard and mouse

Scanner (TWAIN-compatible for Color Professional and Black-and-White Professional only)

Sound card: Creative Labs SoundBlaster® 16-bit or higher with speakers and microphone.

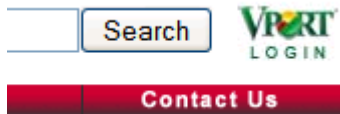
Internet connection

Web browser: Mozilla Firefox 3.5 or later or Microsoft Internet Explorer 7 or later for Read the Web functionality

## Logging In To VPORT

Before you begin, you should have obtained your a user name and password from Cambium/Voyager Customer Service.

In your Web browser, go to: [www.voyagerlearning.com](http://www.voyagerlearning.com) and click **VPORT Login** in the upper right-hand corner of the screen.



Enter user name and password.

The next screen presents views and options that are associated with your user level.

### Notes:

- If you have access to VPORT, the login information for VPORT is also valid for Kurzweil 3000.
- You may change the login information for users that you enter in VPORT. For example, if you are a District Administrator, you may change a Principal, Teacher or Student user's name or password. A Principal may change the information for Teacher users she entered into the database. Teachers may change information for Student users she entered.

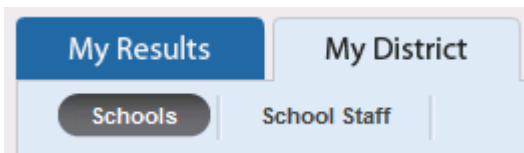
## Setting Up School Staff (District Administrator)

As a District Administrator user, you have the highest level of system authority and privileges, allowing you to do the following:

- Add and manage all levels of school staff, from Principal to Teacher, for any school within the district or “track.”
- Create and edit Class name once a teacher exists in the database. See [Setting Up and Managing Teachers \(Principals\)](#) on page 11.
- Add and enroll Student users. See [Setting Up and Managing Students \(Teachers\)](#) on page 13.

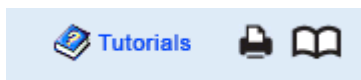
Before you can access VPORT your schools and your user account should have been set up by Cambium Learning Customer Service.

Once you log in to VPORT, the next screen presents views and options that are associated with your user level. As a District Administrator you would see the following tabs, with the default view of **My District** and list of schools.



### DETAILED HELP:

The following are general steps. For details on using VPORT, view the Tutorials or consult the User Guide that are available in the VPORT window near the upper right-hand corner.



### To set up school staff:

1. In **My District** view, click **Add New Staff**.



2. Enter user information.

3. Select the **School** to which the user should be associated.
4. Select the user's **Role**.

	Last Name	First Name	eMail	School	Role
1				( Select location )	( Select role )
2				( Select location )	( Select role )
3				( Select location )	( Select role )
4				( Select location )	( Select role )
5				( Select location )	( Select role )

VPORT offers four Roles, each with different levels of system authorization. For Kurzweil 3000 purposes, a school would typically use only Principal and Teacher.

**Principal** - can create Teachers and Students.

**Campus User** - has system authority similar to Principal; this might be an IT Manager for a school.

**Campus Coach** - has system authority similar to Campus User; perhaps this might be a Department Head.

**Teacher** - has limited authority with only the ability to create and manage students.

5. **Save Changes.**
6. Distribute user login information: Click the **Print** User Logins button, and provide individuals with their login information.
7. **Logout** of VPORT.

Rostered users may now log in to Kurzweil 3000 on any computer that has the Kurzweil 3000 Web License Client software installed on it.

**To edit staff information:**

1. In **My District** view, click the **School Staff** button.
2. Click the **Edit** button for the user you want.



3. Make the edits you want.
4. **Save Changes** and **Logout**.

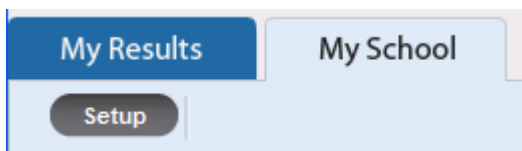
## Setting Up and Managing Teachers (Principals)

As a Principal user, you can do the following:

- Add and manage Teacher information for your school.
- Create and edit Class name once a teacher exists in the database.
- Add and enroll Student users. See [Setting Up and Managing Students \(Teachers\)](#) on page 13.

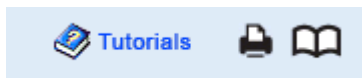
Before you can access VPORT your user account should have been set up by the District Administrator.

Once you log in to VPORT, the next screen presents views and options that are associated with your user level. As a Principal, you would see the following tabs, with the default view of **My School**.



### DETAILED HELP:

The following are general steps. For details on using VPORT, view the Tutorials or consult the User Guide. Both are available in the VPORT window near the upper right-hand corner.



### To set up teachers and classes:

1. In **My School** view, click **Add New Staff**.



2. Enter information and **Save Changes**.

A screenshot of a web interface showing a table with three columns: Last Name, First Name, and eMail. The table has five rows, numbered 1 through 5. Below the table are three buttons: 'Add Rows' (with a plus icon), 'Cancel' (with a red X icon), and 'Save Changes' (with a floppy disk icon).

3. Select a grade-level by clicking on the desired blue grade icon in the last column.
4. To edit the class name, click on the Note icon next to the class name; make the desired changes and click OK.

A screenshot of a form with four fields: Class Name, Teacher, Grade, and Status. The Class Name field contains 'Port Steth Grade', the Teacher field contains 'Pan, Julie', the Grade field contains '6', and the Status field contains 'Active'. Below the fields are two buttons: 'Cancel' (with a red X icon) and 'OK' (with a green checkmark icon).

5. Print and distribute individual login information.
6. **Logout** of VPORT.

Rostered users may now log in to Kurzweil 3000 on any computer that has the Kurzweil 3000 Web License Client software installed on it.

**To edit Teacher information:**

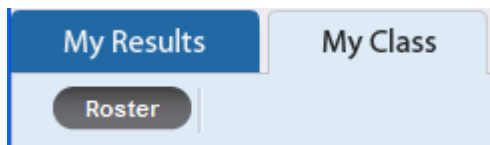
In the **My School** view, click on the **Note** icon next to the teacher name; make the desired changes and **Save Changes**.

## Setting Up and Managing Students (Teachers)

As a Teacher user, you can add and enroll Student users.

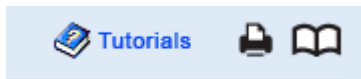
Before you can access VPORT your user account should have been set up by either the District Administrator or the Principal.

Once you log in to VPORT, the next screen presents views and options that are associated with your user level. As a Principal, you would see the following tabs, with the default view of **My Class**.



### DETAILED HELP:

The following are general steps. For details on using VPORT, view the Tutorials or consult the User Guide. Both are available in the VPORT window near the upper right-hand corner.



### To set up students:

1. Select a class from the **Class** dropdown list.
2. Add student(s): Click the **Add Student** button.
3. In the next screen, you can do one of the following:

- To add new students: Click **Add New Students** in the **Class Roster** dialog; enter information and **Save Changes**.

	Last Name	First Name	ID	Birth Date
1	<input type="text"/>	<input type="text"/>	<input type="text"/>	<input type="text"/>
2	<input type="text"/>	<input type="text"/>	<input type="text"/>	<input type="text"/>
3	<input type="text"/>	<input type="text"/>	<input type="text"/>	<input type="text"/>
4	<input type="text"/>	<input type="text"/>	<input type="text"/>	<input type="text"/>
5	<input type="text"/>	<input type="text"/>	<input type="text"/>	<input type="text"/>

- To add an existing student: In the **Available Students** dialog, find the student, click the **Add** arrow, and **Save Changes**.

**Available Students**

Type Last Name or ID

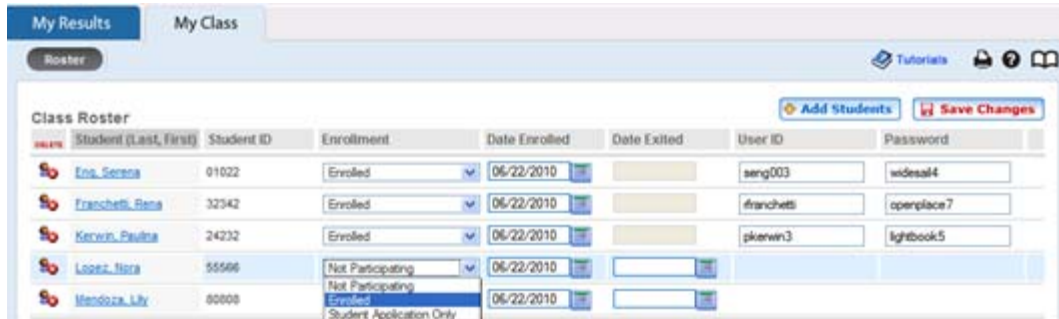
Enter first few letters of a student's name here

Last Name, First Name	ID	Add
To find available students in your district, begin typing the student's last name or their ID number.		
To search for a first name in addition to a last name, type a comma (",") after the last name, followed by the first name.		

4. Return to the **Class Roster** screen.



5. Enroll student: In the **Class Roster**, select **Enrolled** from the **Enrollment** dropdown list, then **Save Changes**.



6. Distribute user login information to new students: Click the **Print** button, and provide each individual with his/her own login information.
7. **Logout** of VPORT.

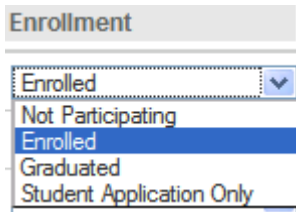
Students may now log in to Kurzweil 3000 on any computer that has the Kurzweil 3000 Web License Client software installed on it.

**To edit student information:**

1. In **My Class Roster** view, select the desired class from the **Class** dropdown list.
2. You can make the following changes:
  - To edit student information, click the student's name, make and **Save Changes**.



- To delete a student, click the **Delete** button for the student.
- To change enrollment status, use the **Enrollment** dropdown list for the student.

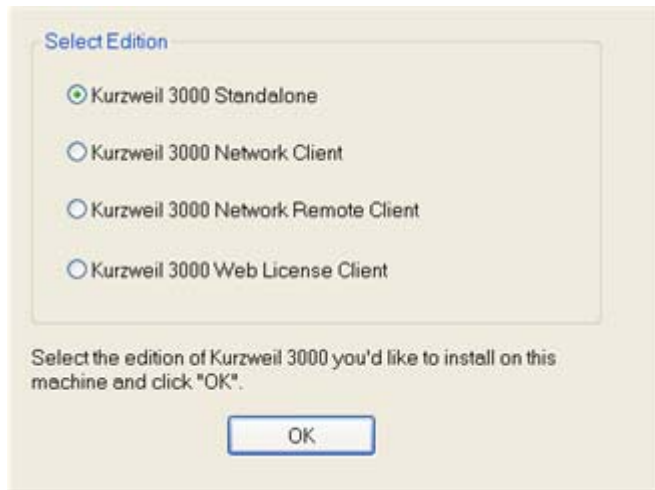


**3. Save Changes and Logout.**

## Installing Web License Client Software

You may need Administrator privilege.

1. Place the Kurzweil 3000 DVD in the computer's DVD drive.
2. Double-click the **Setup** file.
3. In the **Master Installation** dialog, select Network Software.
4. In the Network Software dialog, select Install Web License.
5. In the Select Edition dialog, select Web License Client.



6. Follow the prompts to finish installing the software. You may have to **Restart**.

You are ready to log in to and use Kurzweil 3000 Web License Edition.

**Note:** If you have a 64-bit system, it requires separate installations for the Virtual Printer and Taskbar. Both installers are in the **x64** folder in the top level of the Kurzweil 3000 product DVD.

## Installing the Web License Client Using the MSI Install (IT Professionals)

This option installs the Web License Client computers across your LAN from a central location. It is provided for network administrators who are knowledgeable about MSI packages and have the necessary tools to operate directly on an MSI package.

Microsoft .Net Framework 2.0 must already be installed before using MSI.

Do the following:

1. Use the reduced UI option.
2. Specify the following arguments as properties to the Kurzweil 3000 v.12.msi package:

AUTO= 1 (should be a numeric value)

EDITION = "web"

3. (Optional) You can create a guest-login account. To do so, enter the following arguments as properties to the MSI:

USER = (e.g., guestusername)

PASSWORD = (e.g., guestpwd)

Examples to deploy the MSI through command line:

```
msiexec.exe/i "Kurzweil 3000 v.12.msi" AUTO=1 EDITION ="web" /qr
```

```
msiexec.exe/i "Kurzweil 3000 v.12.msi" AUTO=1 EDITION ="web"
```

```
USER="guestusername" PASSWORD="guestpwd" /qr
```

