



Kurzweil 3000 Web License UPDATES – LIVE!

New license controls were activated for our Kurzweil 3000 Web License customers. These enhanced features become immediately available as a part of the ongoing Web License Maintenance Program. The primary benefit of these new features is the ability to control license type access to users of Kurzweil 3000 Web License. An additional benefit is the ability to see the number of licenses of each type held by the account. (See Fig. 1, below)

With the implementation of the new License Controls, the default license permissions available to end users will be adjusted for *new customers only*. (See Fig. 2) That is to say, any previously established Kurzweil 3000 Web License account will not have license permissions adjusted in any way. If desired, existing customers will need to employ the new controls to adjust license permissions.

New defaults at account set-up will be:

Staff Level Users: Any license type owned by the customer

Student Level Users: Only LearnStations

Changes made at each level (District, School, and Class) flow to the users beneath that level. (See Fig. 3.)

Also, please take note that with the release of the Kurzweil 3000 Version 12.02 patch a timeout feature for Web Licenses was included. Web License customers who apply the patch will now find that users who remain inactive for a period of sixty minutes will be logged off, unless they respond to the message that appears at that time. Five minutes are allowed to respond to this message. If automatically logged off, the user will be left with the ability to save their work locally. (See Figs. 4, 5, and 6.)

Other new updates:

1. A new Kurzweil 3000 Version 12.02 Web License guide is now available from the Support Tab in VPort. Additionally, the new version can be downloaded directly from the website at: http://www.kurzweiledu.com/documentation_downloads.html and is attached to this email.
2. A new video, entitled “Kurzweil 3000 V12 Web License Management via VPORT”, has also been added to the VPort Support Tab. It is recommended that you watch this video to understand how the new License Controls function. This video will be made available from the website with the next update on May 5, 2011.

Figure 1: This is the view of a district level login. Note that you can now see start/end dates for Assignments & Reporting, number of license type owned, and the default license permissions for staff and students. This example shows the default license type availabilities for previously established Web License accounts. Changes made at this level flow through to schools and classes.

The screenshot shows the 'Licenses for CLT Product Management > Kurzweil 3000, 2010-2011' page. It includes a 'Save Changes' button and three tables: License Information, Staff License Permissions, and Student License Permissions.

License Type	Owner	Start Date	End Date	Quantity	Version
Color Pro	district	09/02/2010	N/A	25	12
Black & White Pro	district	09/02/2010	N/A	5	12
Learn Station	district	09/02/2010	N/A	50	12
Assignments & Reporting	district	09/02/2010	09/02/2014	N/A	12

Name	Color Pro	Black & White Pro	Learn Station
Staff Defaults	Enabled	Enabled	Enabled

Name	Color Pro	Black & White Pro	Learn Station
Student Defaults	Enabled	Enabled	Enabled

Figure 2: In this District Level view you can see the license defaults a *new Web License customer* would have. Adjusting the defaults is as simple as clicking the edit button and making a change.

The screenshot shows the same 'Licenses for CLT Product Management > Kurzweil 3000, 2010-2011' page. The license information table is identical to Figure 1. However, the 'Student License Permissions' table shows that the 'Color Pro' and 'Black & White Pro' permissions are now 'Disabled'.

Name	Color Pro	Black & White Pro	Learn Station
Student Defaults	Disabled	Disabled	Enabled

Figure 3: In this School Level view, you can see that the license permissions for Staff and Students have been adjusted at the District Level and “inherited”.

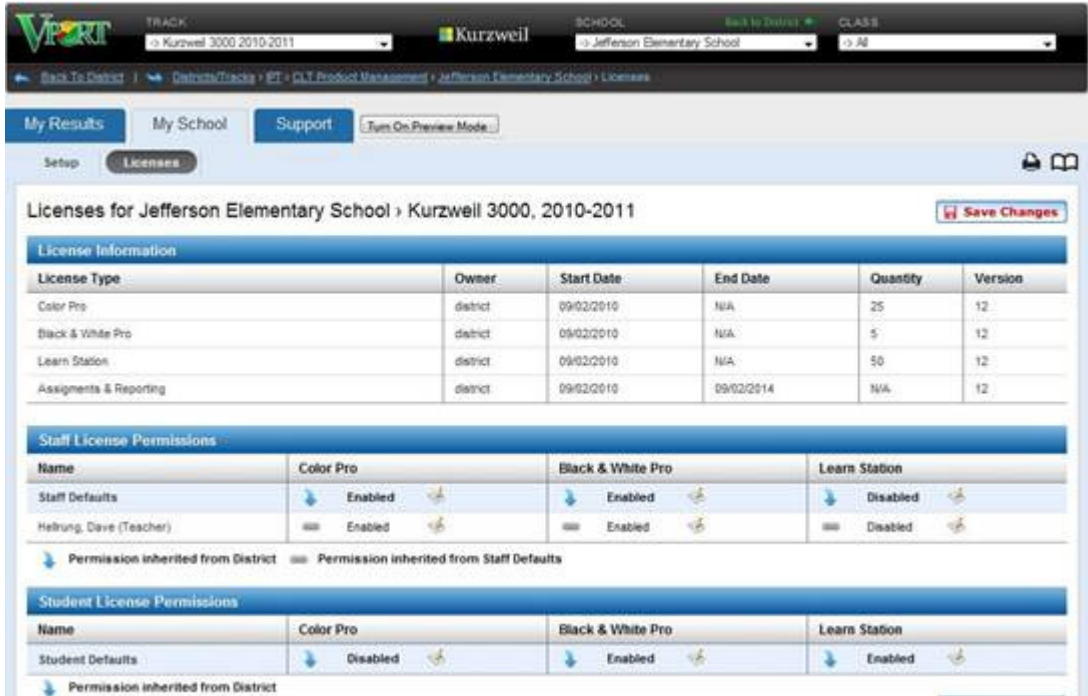


Figure 4: After a period of sixty minutes of inactivity, a user will receive this message.

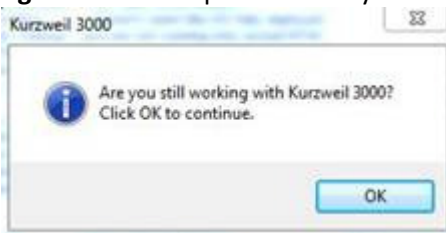


Figure 5: If the user is non-responsive after five minutes, this message appears.



Figure 6: If logged off, all tools grey out and the user may only save their work locally.

